

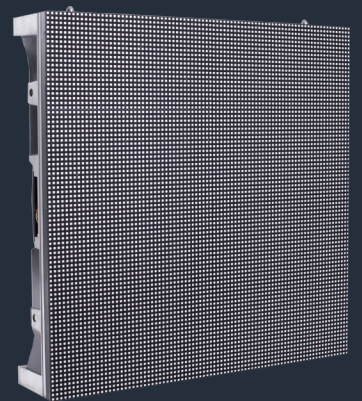
5mm Panasonic Indoor/Outdoor

The 5mm LED Wall for Indoor or Outdoor Use.

The 5mm is a tried-and-true indoor LED video wall. It's also a very strong outdoor LED video wall. With vivid color and high-resolution video images and high brightness levels, this lightweight 5mm LED wall offers a truly versatile solution that looks great in both indoor and outdoor applications.

The 5mm (5.9mm) pixel pitch allows effective viewing from as close as 5m, and provides sufficient pixel density to allow high-quality video reproduction on screens as small as 10m2. The 5,000 nit brightness will deliver bright and crisp images even in full sunlight.

The rugged die-cast chassis allows displays up to full HD resolution to be assembled from a lightweight panel requiring the minimum of additional plant and rigging, allowing access to the most challenging locations. Industry standard processing and high specification cable systems create a simple, high-performance and highly reliable rental package.



SPECIFICATIONS:

Pixel Pitch 5.9 mm
Pixel Resolution (panel) 84 x 84
Brightness 5000 Nit
Contrast Ratio 4200:1
Viewing Angle H: 1400 x V: 900
Pixels Per Panel 7056
Pixels Per Sqm 28224
Panel Height 500 mm/19"
Panel Width 500 mm /19"
Panel Depth 110 mm/4"
Panel Area 0.25 sqm/2.69 sqft
Panel Per Sqm 4
Panel Weight 12 kg / 26 lbs
Panel Weight Per Sqm 48 kg/105 lbs
Maximum Panels Hung 12
Maximum Panels Stacked 12

Curve Capability No
Transparency No
Indoor/Outdoor Both
Input Voltage 110v - 240v AC 50/60Hz
Input Power (Average) 190w
Input Power (Maximum) 380w
IP Rating IP 65

Temperature Range (200 / +500
Humidity 20% to 90%
Input Source SDI, HDSDI, HDMI, DVI
Color Depth 16 Bit
Refresh Rate 2000-3000 Hz
[Selection option--to populate the QUOTE Request]

